

STAINLESS STEEL WURSTEL CUTTER 6 mm THICK

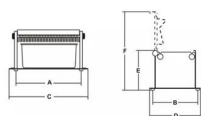
SIRMAN WURSTEL CUTTING MACHINE MODEL TW 6 IN STAINLESS STEEL



vedi prodotto online

CODICE: **30350600**

MARCA: **SIRMAN**



Dati Tecnici:

Modello	TW 6
Distanza lame:	mm 6
Lame:	nr. 34
A:	mm 240
B:	mm 160
C:	mm 280
D:	mm 170
E:	mm 170
F:	mm 270

SOLUZIONI FOODSERVICE

Manual sausage cutter in stainless steel, simple to use and to clean.

Easily cuts frankfurters, eggs, tomatoes; in fact, just place the product on the blades and lower the lid until it is completely closed, and the slices will automatically fall into the tray below, ready to be used.