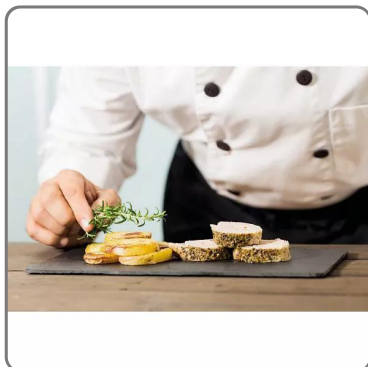
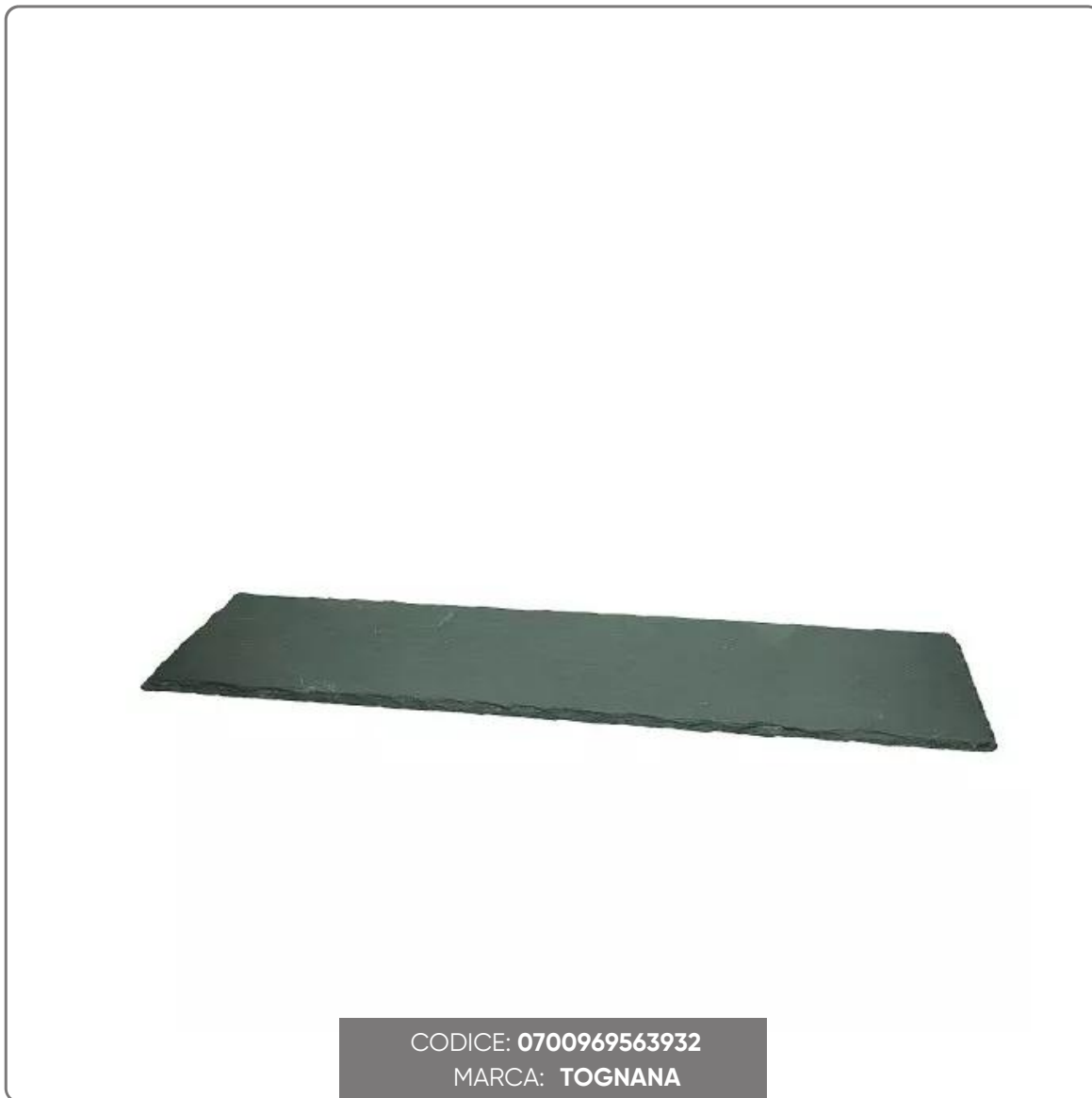


OLLY SLATE PLATE cm.36x13

HAND-WORKED SLATE TRAY, WITH NATURAL EDGE, OILED SURFACE AND NON-SLIP FEET cm.36x13 thickness cm.0,5



SOLUZIONI FOODSERVICE

Ideal for finger food or for restaurants that combine modern and rustic styles, guaranteeing a guaranteed eye-catcher and outstanding originality.

Slates and pieces of slate skilfully extracted and worked by master craftsmen. The natural irregularities of the surface are voluntarily left. An ecological material of ancient and mining origin.

The black colour, always elegant, highlights the white of the porcelain and the colors of the preparations. A silicone patina creates a non-slip and scratch-resistant layer. Applies to all items. The pieces are cut by hand to leave those small imperfections typical of an artisan product.

Products not compatible with use in microwave ovens and dishwashers. Hand washing is recommended. Simple cleaning with a damp cloth or cooking oil. It tolerates direct contact with hot or cold surfaces very well. Possible use in the freezer or refrigerator.