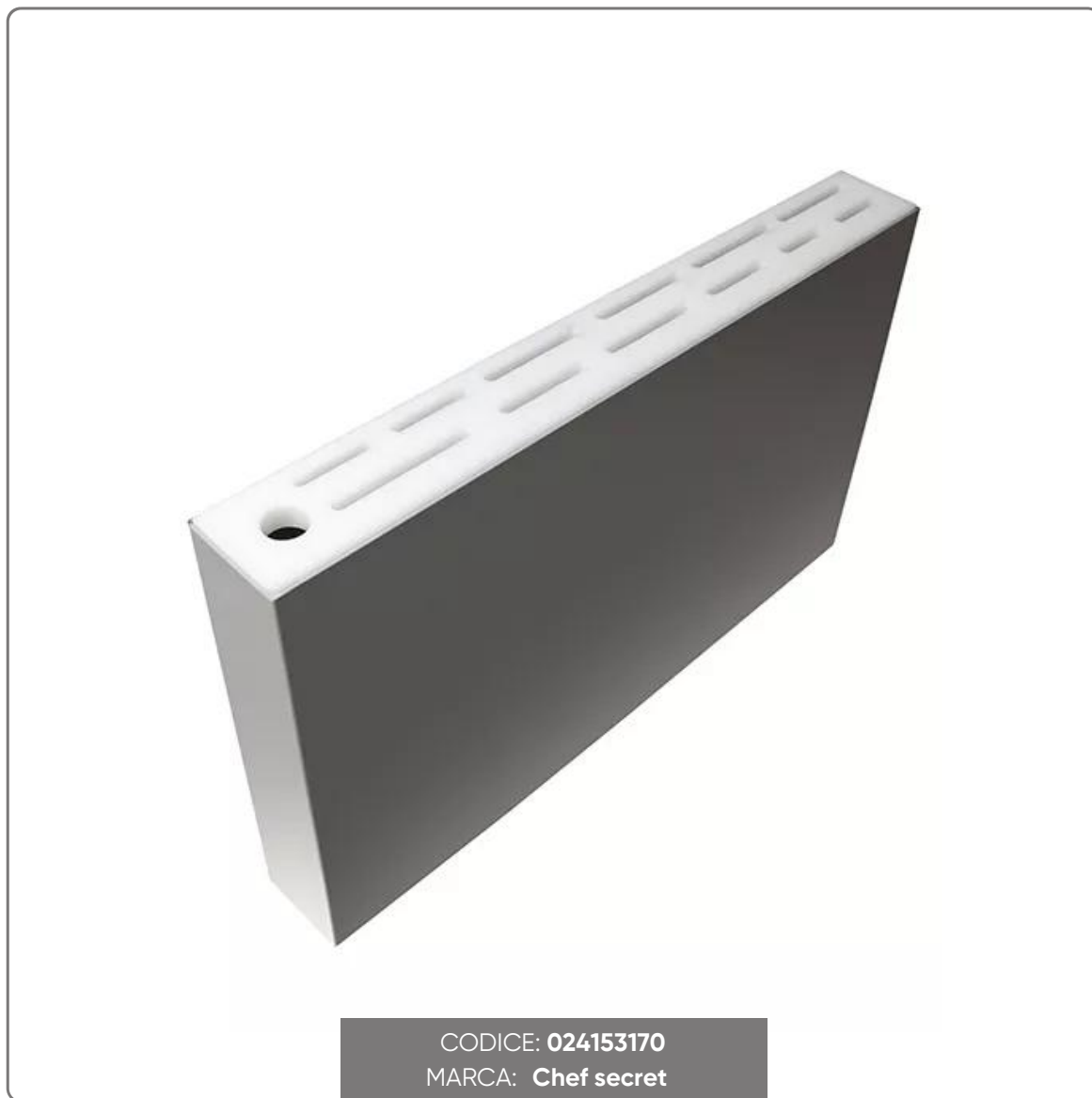


**STAINLESS STEEL KNIFE HOLDER WITH POLYETENE SHELF**  
**cm.66,5x8x40H**

CHEF'S SENO&SENO LINE STAINLESS STEEL KNIFE HOLDER WITH MILLED POLYETHYLENE PLATE FOR INSERTION OF ABOUT 14 pcs. AND A STEEL



vedi prodotto online

CODICE: 024153170  
MARCA: Chef secret



# SOLUZIONI FOODSERVICE

Knife holder in aisi-304 stainless steel sheet open below with eyelet pre-drilling on the long side for wall or table side suspension (dowels and screws not included)

Removable shelf in white HD500 food-grade polyethylene, 2 cm thick, milled for the insertion of the knife blade. Capacity about 14pcs.

Hole for inserting a steel

Dimensions cm.66,5x8x40H