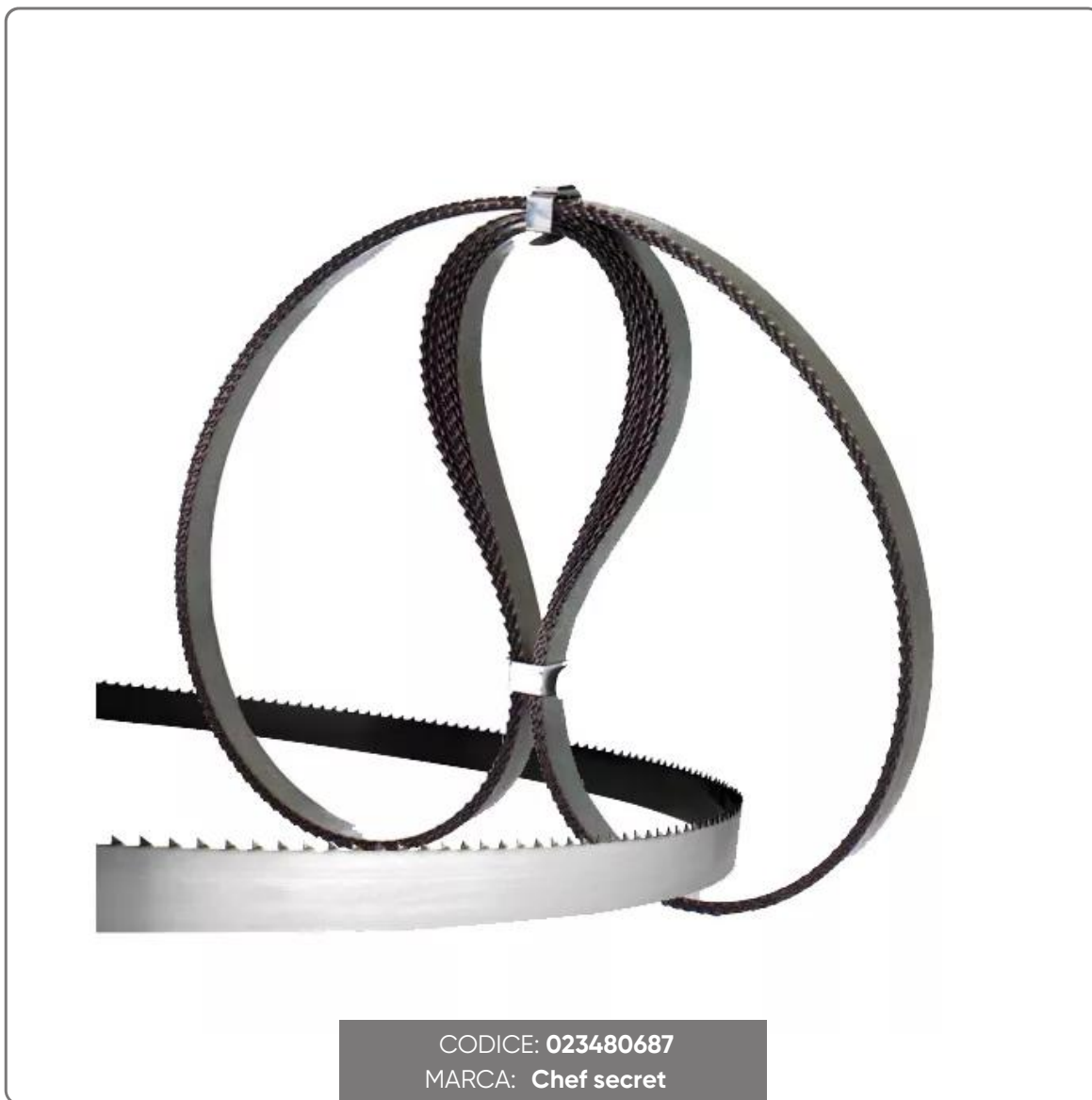
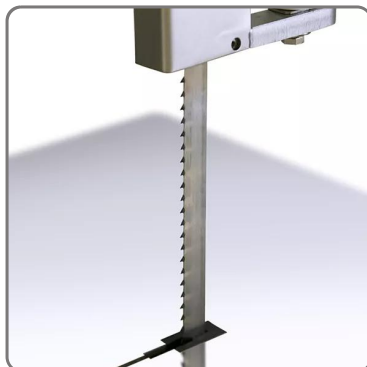
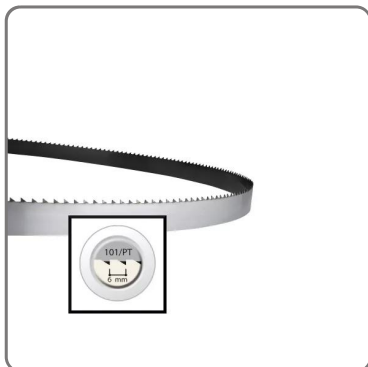


BONESAW BLADES mm. 3150x20 PACK OF 10 PIECES

BONESAW BLADES IN CARBON STEEL SPACED AND TEMPERED FOR CUTTING FRESH MEAT WITH BONE mm.3150x20
PACK OF 10 PIECES



vedi prodotto online



SOLUZIONI FOODSERVICE

- The blades for bone saw machines are indicated for cutting fresh meat with bone.
- They are built with the best steels, rich in carbon, for greater cutting resistance.
- The spaced teeth and the sharpening made with precision tools make the cut penetrating and clean.
- The electric induction hardening process gives a high hardness to the tips of the teeth for a long duration of the cut.