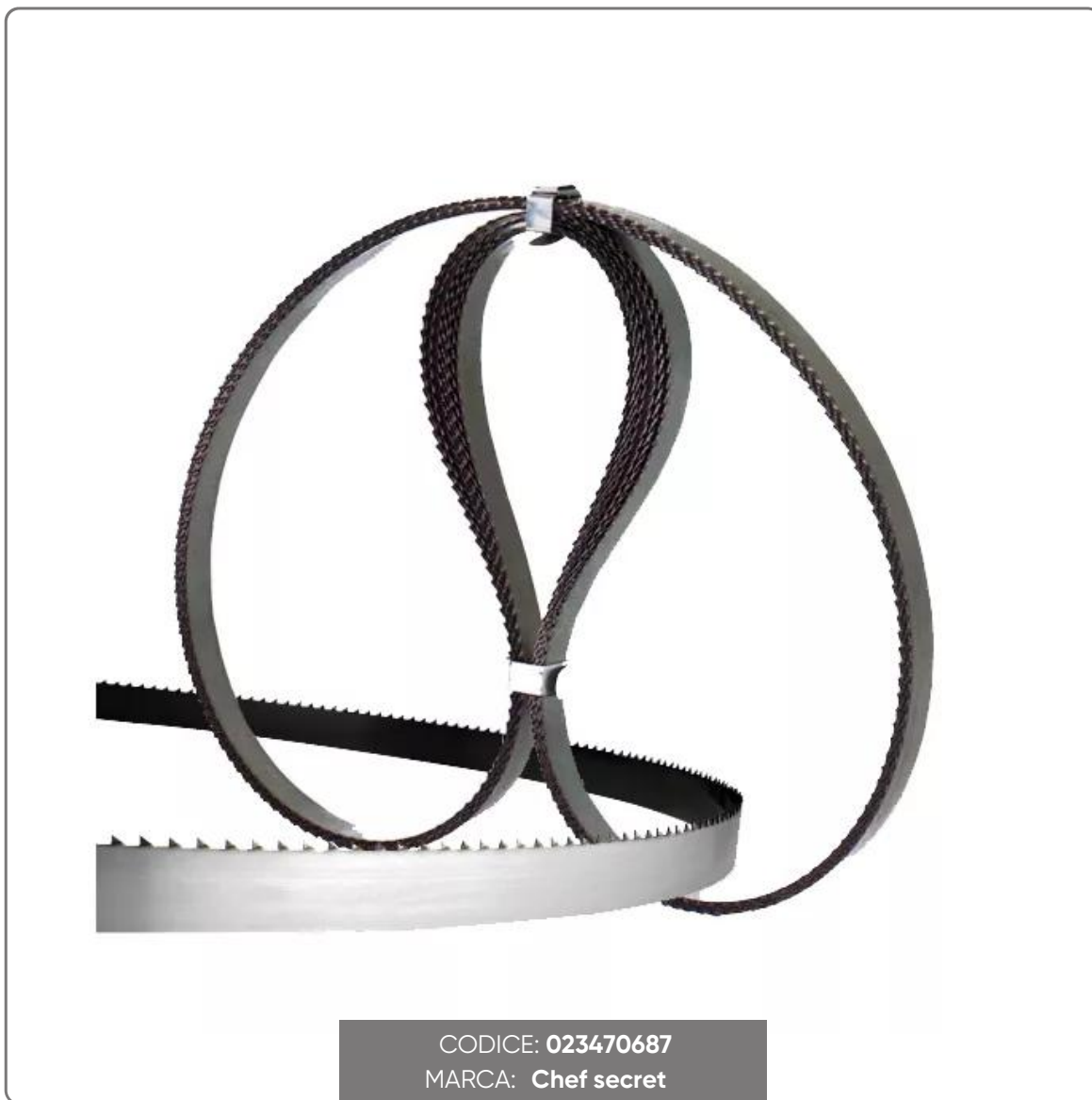
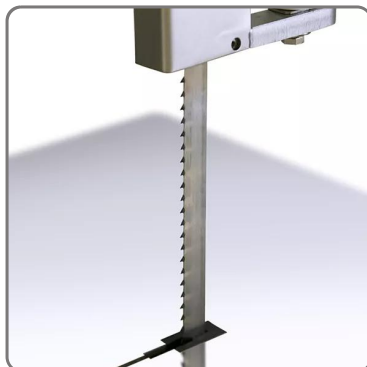
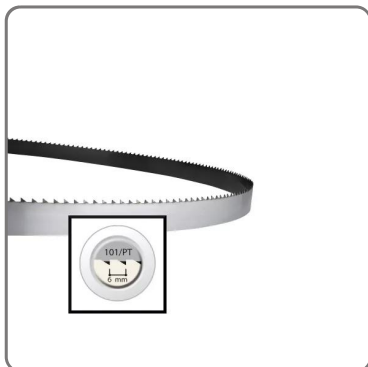


**BONESAW BLADES mm. 3100x20 PACK OF 10 PIECES**

BONESAW BLADES IN CARBON STEEL SPACED AND TEMPERED FOR CUTTING FRESH MEAT WITH BONE mm.3100x20  
PACK OF 10 PIECES



vedi prodotto online



# SOLUZIONI FOODSERVICE

- The blades for bone saw machines are indicated for cutting fresh meat with bone.
- They are built with the best steels, rich in carbon, for greater cutting resistance.
- The spaced teeth and the sharpening made with precision tools make the cut penetrating and clean.
- The electric induction hardening process gives a high hardness to the tips of the teeth for a long duration of the cut.