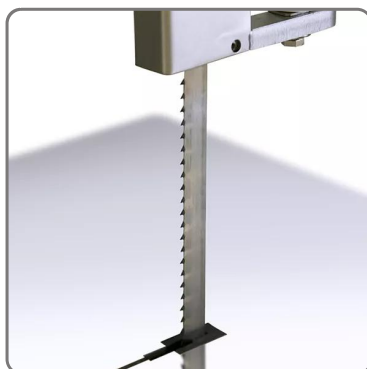


BONESAW BLADES mm. 1600x20 PACK OF 10 PIECES



vedi prodotto online



SOLUZIONI FOODSERVICE

- The blades for bone saw machines are indicated for cutting fresh meat with bone.
- They are built with the best steels, rich in carbon, for greater cutting resistance.
- The spaced teeth and the sharpening made with precision tools make the cut penetrating and clean.
- The electric induction hardening process gives a high hardness to the tips of the teeth for a long duration of the cut.